

SAP Crystal Solutions Licensing



Applies to:

SAP Crystal Reports versions 8.5-2011
SAP Crystal Reports for Visual Studio .NET 2002-2010
SAP Crystal Reports for Eclipse
SAP Crystal Dashboard Design 2008-2011
SAP Crystal Presentation Design 2008-2011
SAP Crystal Reports Server 2008
SAP Crystal Server 2011

Summary

This document summarizes licensing for most products in the SAP Crystal solutions portfolio.

Author: Blair Wheadon

Company: SAP

Created on: 14 April 2009

Updated on: 16 March 2011. Add section covering SAP Crystal Reports Server

Author Bio



Blair Wheadon is a Solution Manager at SAP. His team works with the SAP Crystal portfolio of solutions offered through our distribution channel and eStore.

Table of Contents

Introduction	3
SAP Crystal Reports	3
Usage with Terminal Servers	3
Upgrades	3
Training	3
Screenshots	3
Embedded SAP Crystal Dashboard Design (Xcelsius) Models	3
OEM Products	4
Product Name Changes	4
Application Redistribution	5
Definitions	5
SAP Crystal Reports 2008, SAP Crystal Reports for Eclipse 2.0, and SAP Crystal Reports for Visual Studio 2010	5
Crystal Reports XI Release 1 and Crystal Reports XI Release 2	6
Crystal Reports 9 and Crystal Reports 10	7
Crystal Reports 8.5	7
SAP Crystal Reports for Eclipse Embedded Designer	8
Report Creation API (RCAPI)	8
RDC Embeddable Report Designer	8
Licensing Responsibility	8
How to Get An OEM Contract	8
SAP Crystal Reports for Visual Studio	9
Application Redistribution	9
SAP Crystal Reports for Visual Studio 2010	9
SAP Crystal Dashboard Design and SAP Crystal Presentation Design	10
Data Connections	12
Live Data Connections and Licensing	13
Redistribution Rights	13
Special Editions	13
SAP Crystal Reports Server 2008 and SAP Crystal Server 2011	14
NUL and CAL License Types Compared	14
Feature Availability By License Type	15
Publishing	15
Licensing Programs	16
Volume Licensing	16
Academic Licensing	16
Appendix 1: Identifying Workstations with Crystal Reports Installed	17
Appendix 2: List of RDC Report Creation API Calls	18
Copyright	22

Introduction

This document provides a summary of major aspects of Crystal Reports licensing since version 8.5 of Crystal Reports. It does not replace the End User License Agreement. This is not a legal document. While every effort is made to ensure this is an accurate summary, any errors or omissions in this whitepaper will be resolved by using the language in the appropriate End User License Agreement.

SAP Crystal Reports

This section applies to the paid Crystal Reports design tool, versions 8.5 through 2011, and the free Crystal Reports for Visual Studio 2010 product.

The SAP Crystal Reports designer and SAP Crystal Reports for Visual Studio 2010 add-on uses a named user license. This means that every individual that has access to Crystal Reports requires a license.

For example, 2 individuals that share workstations with a single install count as 2 named user licenses.

10 individuals that use SAP Crystal Reports through a shared Citrix terminal server count as 10 named user licenses.

Usage with Terminal Servers

SAP Crystal Reports can be accessed through Citrix terminal servers or Microsoft Remote Desktop, but the number of named user licenses purchased must equal the number of individuals that have access to the software.

Client applications that are accessed via terminal servers are considered server applications for the purposes of determining redistribution rights.

Upgrades

Discounted upgrade pricing is available for customers that upgrade from:

- Older versions of Crystal Reports
- SAP Crystal Reports for Eclipse
- SAP Crystal Reports for Visual Studio

After upgrading your license, the same named user can continue to use the old version. The old license is not transferrable to another individual.

Training

Workstations that are used exclusively for training purposes can use the new Training Workstation License included in SAP Crystal Reports 2008 SP2 or later that allows a workstation to be licensed for training purposes for the same price as a named user.

Screenshots

SAP Crystal Reports customers can take screenshots and redistribute them in any document or media provided they are not used in commercial training material or for-profit training material.

Embedded SAP Crystal Dashboard Design (Xcelsius) Models

Embedding Flash models in a SAP Crystal Reports 2008 report does not require the viewing license as long as the model retrieves its data directly from the Crystal Report.

If the model retrieves its data using any other method (such as through a web service), then that will trigger the viewing license.

Embedding Dashboard Design models in a Crystal Report is not a substitute for a proper dashboard.

OEM Products

In this scenario, you buy a product that includes or bundles Crystal Reports. This is what is known as an OEM relationship where SAP sells (or OEM's) the Crystal Reports designer to other software companies, who in turn bundle the designer with their software and sell it to end users.

Crystal Reports in this scenario can only be used with data from the application it came with, and cannot be used as a general purpose reporting tool.

Product Name Changes

Starting in mid 2010, some product names changed as we introduced the SAP Crystal portfolio. Legacy products older than the 2008 version continue with their existing names. Here are the details.

Old Name	New Name
Crystal Reports Server 2008	SAP Crystal Reports Server 2008
Crystal Reports 2008	SAP Crystal Reports 2008
Crystal Reports Developer Advantage	SAP Crystal Reports runtime server license
Crystal Reports for Eclipse	SAP Crystal Reports version for Eclipse
Xcelsius Engage	SAP Crystal Dashboard Design, personal edition
Xcelsius Present	SAP Crystal Presentation Design
Xcelsius Engage Server	No new name – product has been end of lifed.

In addition, with the 2011 release, SAP Crystal Reports Server is renamed to SAP Crystal Server to emphasize the positioning as an entry level BI solution.

Application Redistribution

This section describes the rules that govern redistribution of software that embeds the Crystal Reports runtime engine, embeddable report designer, or uses the Report Creation APIs.

Definitions

Client Application	The runtime engine is installed on the client machine. All report processing is local to that machine.
Server Application	The runtime engine is integrated in a way that allows more than one user to access the engine either directly or indirectly. Client applications installed using Windows terminal servers (like Citrix or Microsoft Remote Desktop) are considered server applications.
Commercial Hosting Service	When money changes hands in exchange for application access, then a server application is considered part of a commercial hosting service. This is not a new restriction. It appears as restriction against 'service bureau' usage in licenses prior to Crystal Reports 2008 SP2. We modernized the language in Crystal Reports 2008 SP2 to refer to the more common 'commercial hosting service'.

SAP Crystal Reports 2008, SAP Crystal Reports for Eclipse 2.0, and SAP Crystal Reports for Visual Studio 2010

This section applies to:

- .Net applications that include Crystal Reports 2008 for Visual Studio runtime engine.
- .Net applications that include the Crystal Reports for Visual Studio 2010 runtime engine
- Java applications that include the Crystal Reports for Eclipse 2.0 runtime engine.

Note that unlike previous versions, SAP Crystal Reports 2011 does not include a runtime engine. Customers are directed to use the free SAP Crystal Reports for Visual Studio 2010, or SAP Crystal Reports for Eclipse products for embedding reports into applications.

Application Type / Used By	Client Application	Server Application	Commercial Hosting Service
Employees and Contractors	Free	Free	Requires OEM contract
Anyone other than an employee or contractor	Free	Requires the SAP Crystal Reports runtime server license (formerly Crystal Reports Developer Advantage), or an OEM contract.	Requires OEM contract

Crystal Reports XI Release 1 and Crystal Reports XI Release 2

This section applies to redistribution rules for the COM (RDC), .Net, and Java (JRC) runtime engines included in Crystal Reports XI Release 1 and Crystal Reports XI Release 2 versions.

Application Type Deployment Location	Client Application	Server Application	Commercial Hosting Service
Internal Deployment	Free	Free	Requires OEM contract
External Deployment	Free if the application does not use the RDC RAPI or does not embed the RDC Embeddable Designer. Otherwise it's considered a server application.	Requires one copy of Crystal Reports Developer edition per customer you deploy to, or an OEM contract.	Requires OEM contract

Crystal Reports 9 and Crystal Reports 10

The following table applies to redistribution rules for the COM (RDC), .Net, and Java (JRC) runtime engines included in Crystal Reports versions 9 and 10.

Application Type Deployment Location	Client Application	Server Application	Commercial Hosting Service
Internal Deployment	Free	Free	Requires OEM contract
External Deployment	Free if the application does not use the RDC RCAPI or does not embed the RDC Embeddable Designer. Otherwise it's considered a server application and requires an OEM contract.	Requires OEM contract.	Requires OEM contract

Crystal Reports 8.5

The following table applies to redistribution rules for the COM (RDC), .Net, and Java (JRC) runtime engines included in Crystal Reports versions 9 and 10.

Application Type Deployment Location	Client Application	Server Application	Commercial Hosting Service
Internal Deployment	Free	Free. Limited to a maximum of 5 concurrent accesses. The Server Software Access License (SSAL) is required to add additional users.	Requires OEM contract
External Deployment	Free if the application does not use the RDC RCAPI or does not embed the RDC Embeddable Designer. Otherwise it's considered a server application and requires an OEM contract.	Requires OEM contract.	Requires OEM contract

SAP Crystal Reports for Eclipse Embedded Designer

The Crystal Reports for Eclipse product includes an embedded designer that can be extracted from Eclipse and embedded into an RCP application.

Redistributing applications that embed this report designer requires an OEM contract.

Report Creation API (RCAPI)

Crystal Reports versions 8 through XI Release 2 included a set of APIs called the Report Creation APIs. These APIs allowed for programmatic report creation and modification and are listed at the end of this document.

In versions 8.5, and 9, access to the RCAPI calls are keycode controlled.

In versions 10 and later, RCAPI calls are always accessible, but there are limits on how applications that use the RCAPI can be redistributed.

RDC Embeddable Report Designer

This is a basic version of the Crystal Reports designer that can be embedded into client applications. Applications that include the embeddable designer are treated as RCAPI applications for the purposes of licensing.

Licensing Responsibility

It is the responsibility of the developer to ensure their application is properly licensed before redistributing it. Developers cannot distribute applications on the assumption that the application user will acquire the proper licenses.

How to Get An OEM Contract

Please contact our OEM sales team at oem_sales@sap.com.

SAP Crystal Reports for Visual Studio

This section covers the free version of Crystal Reports included with Visual Studio 2002, 2003, 2005, and 2008.

It also covers SAP Crystal Reports for Visual Studio 2010 that is delivered as a free download outside of Visual Studio 2010.

This product is only included in Visual Studio Professional Edition and higher.

Application Redistribution

This section applies to rules that govern redistribution of software that embeds the Crystal Reports runtime engine included with Visual Studio .Net.

Application Type Used By	Client Application	Server Application	Commercial Hosting Service
Internal Deployment	Free	Free	Requires OEM contract
External Deployment	Free	Registration required here	Requires OEM contract

SAP Crystal Reports for Visual Studio 2010

SAP Crystal Reports for Visual Studio 2010 adopts the SAP Crystal Reports 2008 redistribution rules. Please see [this section](#) for more information on the redistribution rules for SAP Crystal Reports for Visual Studio 2010.

SAP Crystal Dashboard Design and SAP Crystal Presentation Design

Feature and licensing comparison table for SAP Crystal Presentation Design, SAP Crystal Dashboard Design, and SAP BusinessObjects Dashboards.

This covers versions 2008 and 2011.

	SAP Crystal Presentation Design	SAP Crystal Dashboard Design, personal edition	SAP Crystal Dashboard Design, departmental edition	SAP BusinessObjects Dashboards (formerly Xcelsius Enterprise)
Basic data presentation components	<input checked="" type="checkbox"/>	<input checked="" type="checkbox"/>	<input checked="" type="checkbox"/>	<input checked="" type="checkbox"/>
Export to Adobe PDF and Microsoft Office PowerPoint	<input checked="" type="checkbox"/>	<input checked="" type="checkbox"/>	<input checked="" type="checkbox"/>	<input checked="" type="checkbox"/>
Dashboard components		<input checked="" type="checkbox"/>	<input checked="" type="checkbox"/>	<input checked="" type="checkbox"/>
Live, refreshable data connections per model*		2 connections	Unlimited	Unlimited
Export to Web, Adobe AIR, Adobe Flash		<input checked="" type="checkbox"/>	<input checked="" type="checkbox"/>	<input checked="" type="checkbox"/>
Connectivity to Adobe LiveCycle Data Services			<input checked="" type="checkbox"/>	<input checked="" type="checkbox"/>
IBM Websphere, Microsoft SharePoint, and Microsoft SQL Server Reporting Services integration			<input checked="" type="checkbox"/>	<input checked="" type="checkbox"/>

	SAP Crystal Presentation Design	SAP Crystal Dashboard Design, personal edition	SAP Crystal Dashboard Design, departmental edition	SAP BusinessObjects Dashboards (formerly Xcelsius Enterprise)
Data Connectivity	None – static data only	Web Service XML Data Flash Variables Crystal Reports FS Command External Interface	Personal edition plus: Web Service XML Data Portal Data LCDS (Live Cycle Data Services) Live Office	Departmental edition plus: Query as a Web Service SAP NetWeaver BW
BI Platform Connectivity			SAP Crystal Reports Server 2008 SAP Crystal Server 2011	SAP BusinessObjects XI 3.X SAP BusinessObjects BI 4.0 SAP BusinessObjects Edge Series
Viewing License required for dashboards with live data connections			SAP Crystal Dashboard Viewing option	SAP BusinessObjects Interactive Viewing license
Limitations	This is a desktop presentation tool, and has no ability to connect to live data	A maximum of 2 web service and XML connections are supported in any given model. See the section called 'Data Connections' for more information.	<ul style="list-style-type: none"> • Maximum of 100 named users can view a dashboard with live data connections. <ul style="list-style-type: none"> • Cannot connect to SAP applications like SAP BusinessSuite or SAP All in One – except for SAP BusinessOne. • Cannot be used with SAP BusinessObjects Enterprise or SAP Edge BI 	None

Data Connections

The personal edition supports a maximum of 2 web service connections from any model.

Once the limit of 2 web service connections is reached, you cannot add additional connections in the Data Manager. The 'Web Service Connection' option is greyed out as shown below:

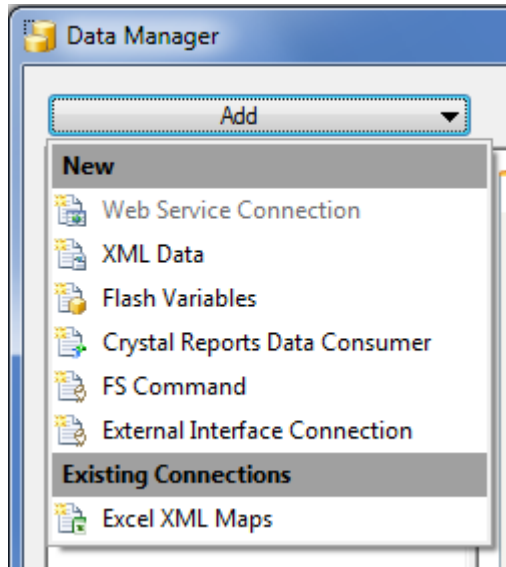


Figure 1: Data Manager in a model with 2 Web Service Connections

A web service connection is defined as a single method on a web service. Calling 2 separate methods on the same web service counts as 2 connections.

Here's the maximum number of connections supported in the personal and departmental editions, for each connection type:

Data connection in the personal edition	Maximum Connections per Model in personal edition	Maximum Connections per Model in departmental edition	Maximum Connections per Model in SAP BusinessObjects Dashboards
Web Service Connection	2	Unlimited	Unlimited
XML Data	2	Unlimited	Unlimited
Flash Variables	1	1	1
Crystal Reports Data Consumer	1	1	1
FS Command	Unlimited	Unlimited	Unlimited
External Interface Connection	Unlimited	Unlimited	Unlimited
Portal Data		1	1
Adobe Live Cycle Data Services (LCDS) for data push		Unlimited	Unlimited
Live Office		1	1
Query as a Web Service			Unlimited
SAP Netweaver BW			Unlimited

Live Data Connections and Licensing

A dashboard is considered to have a live data connection if it has any ability to refresh its data. This includes refreshing data through a data connection, publishing, pushing, or otherwise changing data in a generated SWF file. This includes batch update utilities that update data in a SWF file.

Dashboards created by SAP Crystal Dashboard Design, departmental edition and SAP BusinessObjects Dashboards that have a live data connection require a viewing license.

Redistribution Rights

A 'self-contained' dashboard that has no external data connections can be freely redistributed, internally and externally, and in commercial applications.

A dashboard with a live data connection can only be used for internal business purposes, and cannot be redistributed in any sale or lease.

The paid creation or modification of a dashboard by a 3rd party is not considered redistribution and is allowed.

The commercial redistribution of dashboards with live data connections requires an OEM contract. Please contact our OEM sales team at oem_sales@sap.com.

Special Editions

The SAP Crystal Presentation Design, student edition is only available for use by full time or part time students in a secondary or post-secondary institution.

The SAP Crystal Presentation Design, enterprise edition is an enterprise wide license that licenses all employees and contractors of the corporate entity that holds the license. This license does not extend beyond corporate entities, for example to other subsidiary companies.

SAP Crystal Reports Server 2008 and SAP Crystal Server 2011

NUL and CAL License Types Compared

SAP Crystal Server supports combinations of Named User License (NUL) and Concurrent Access License (CAL). This table describes the benefits and drawbacks of each license type.

	NUL	CAL
Benefits	<p>Guaranteed access to the system.</p> <p>Ideal for heavy users, or users that must have access to the system (for example, quarter end reporting).</p>	<p>Flexibility – allows for a pool of access that can be used to grant logins.</p> <p>Ideal for casual, infrequent users.</p>
Drawbacks	<p>Every potential user must have a license.</p> <p>Not ideal for extranet deployments.</p>	<p>Once the pool of CAL licenses is consumed, no more CAL users can connect. This can be an issue when not enough CALs are configured.</p> <p>If the user doesn't explicitly logout, CALs can be retained in the system for a period of time.</p> <p>CALs are based on sessions, not users. If 1 user logs in to the BI Workbench (InfoView), Live Office, and Sharepoint at the same time, then they consume 3 CALs, not one. This can result in CALs being consumed faster than expected.</p>

For many customers, a combination of CAL and NUL licenses is appropriate depending on the mix of user types. CALs are best for casual reporting users, while NULs are best for managers, executives, and analysts who want to consume

SAP Crystal Reports Server supports a maximum of 100 NUL and 250 CAL on a single server.

Both NUL and CAL licenses can be combined in any way, up to these maximums. Licenses are offered in the license sizes defined below. When adding new licenses to an existing system, the new licenses are additive. The total number of licenses available for a single deployment is the sum of the licenses in all installed keycodes.

Feature Availability By License Type

Most features are supported in both NUL and CAL licenses. However some features are only available in one license type, as shown in this table:

Feature	Concurrent Access (CAL)	Named User (NUL)
License Sizes	5, 10, 20, 250	5, 50, 100
Maximum Size	250	100
SAP Crystal Dashboard viewing	Not available	Included
SAP BusinessObjects Explorer	Not available	Included in SAP Crystal Server 2011
BI Workspaces (Dashboard Builder)	Not available	Included
Data Driven Publishing	5 CAL can publish to 100 recipients 10 CAL can publish to 250 recipients 20 CAL can publish to 1,000 recipients 250 CAL can publish to unlimited recipients	Not included
SAP Crystal Reports Viewing	Included in both CAL and NUL	
Sharepoint Portal Integration Kit	Included in both CAL and NUL	
.NET and Java APIs	Included in both CAL and NUL	
Live Office	Included in both CAL and NUL	
All Other Features	Included in both CAL and NUL	

Publishing

Publishing is limited to a maximum number of recipients in a single publishing run. By default, publishing is only available with CAL keycodes.

You can add publishing to a NUL system by using the publishing addon that can add support for publishing to 5,000 recipients in a single publishing run. This publishing addon adds additional recipients to the existing recipients that are already configured for a deployment.

For example, if you have a 5 CAL deployment, and add the publishing addon, then you can publish to a total of 5,100 recipients in a single publishing run.

Licensing Programs

Volume Licensing

We offer a volume discount program based on the number of units purchased per transaction. The discount level is based on the total number of units of SAP Crystal Reports, SAP Crystal Dashboard Design, SAP Crystal Presentation Design, and SAP Crystal Interactive Analysis products (all versions, either upgrade or full product) that are purchased in a single transaction.

1-2 units	No discount
3-9 units	10% discount
10-49 units	15% discount
50 and above	25% discount
Government, Education, Not for Profit customers	15% discount

This does not apply to SAP Crystal Reports Server or SAP BusinessObjects Edge Series products as a volume discount is already built into the price.

Academic Licensing

Through a series of global Academic Research Centers, SAP Crystal Reports and other software is available free of charge to post-secondary institutions for use in programs leading to a degree, or for research purposes.

For more information contact arc@sap.com.

Appendix 1: Identifying Workstations with Crystal Reports Installed

Workstations with a version of Crystal Reports installed will have the following keys in the registry. You can use these keys with an automated software inventory tool to count the number of licenses in use.

Version and Edition	Registry Key
2008 Crystal Reports 2008 has a single edition.	HKEY_LOCAL_MACHINE\SOFTWARE\Business Objects\Suite 12.0\Crystal Reports\Version
XI Release 2 Developer Edition	HKEY_LOCAL_MACHINE\SOFTWARE\Business Objects\Suite 11.5\Crystal Reports\Keycodes\CR Dev
XI Release 2 Professional Edition	HKEY_LOCAL_MACHINE\SOFTWARE\Business Objects\Suite 11.5\Crystal Reports\Keycodes\CR Pro
XI Release 2 Standard Edition	HKEY_LOCAL_MACHINE\SOFTWARE\Business Objects\Suite 11.5\Crystal Reports\Keycodes\CR Std
XI Developer Edition	HKEY_LOCAL_MACHINE\SOFTWARE\Business Objects\Suite 11.0\Crystal Reports\Keycodes\CR Dev
XI Professional Edition	HKEY_LOCAL_MACHINE\SOFTWARE\Business Objects\Suite 11.0\Crystal Reports\Keycodes\CR Pro
XI Standard Edition	HKEY_LOCAL_MACHINE\SOFTWARE\Business Objects\Suite 11.0\Crystal Reports\Keycodes\CR Std
10 Developer Edition	HKEY_LOCAL_MACHINE\SOFTWARE\Crystal Decisions\10.0\Crystal Reports\Keycodes\CR Ent
10 Professional Edition	HKEY_LOCAL_MACHINE\SOFTWARE\Crystal Decisions\10.0\Crystal Reports\Keycodes\CR Pro
10 Standard Edition	HKEY_LOCAL_MACHINE\SOFTWARE\Crystal Decisions\10.0\Crystal Reports\Keycodes\CR Std

Appendix 2: List of RDC Report Creation API Calls

Any RDC application that uses these properties, events, or methods are considered RCAP API applications for the purposes of licensing.

Object Name	Method(s), Property(ies) and Event(s)
Application	Method - NewReport
CrossTabGroup	Properties - BackColor - Condition - EnableSuppressLabel -EnableSuppress-Subtotal -Field -SortDirection -SpecifiedGroups
CrossTabGroups	Methods -Add -Delete
CrossTabObject	Properties -ColumnGrandTotalColor -ColumnGroups -EnableKeepColumnsTogether -EnableRepeatRowLabels -EnableShowCellMargins -EnableShowGrid -EnableSuppressColumnGrandTotals -EnableSuppressEmptyColumns -EnableSuppressEmptyRows -EnableSuppressRowGrandTotals -RowGrandTotalColor -RowGroups -SummaryFields
Database	Methods -ConvertData -BaseDriver Properties -Links
DatabaseTables	Methods -Add -Delete Properties - AddStoredProcedure
FieldDefinitions	Methods -Add -Delete
FormulaFieldDefinitions	Methods -Add

	-Delete
GraphObject	Methods -ConditionFields -CrossTabObject -EnableForEachRecord -EnableSummarizeValues -SpecifiedGroups -SummaryFields
ObjectSummaryFieldDefinitions	Methods -Add -Delete
ParameterFieldDefinitions	Methods -Add -Delete
Report	Property -ReportAlerts Method -DeleteGroup Event -FieldMapping
ReportAlert	Properties -AlertInstances -ConditionFormula -Defaultmessage -IsEnabled -MessageFormula -Name -Parent
ReportAlertInstance	Properties -AlertMessage -Parent
ReportAlertInstances	Properties -Count -Item -Parent
ReportAlerts	Properties -Count -Item Methods -Add -Delete
RunningTotalFieldDefinition	Properties -EvaluateCondition -EvaluateConditionField -EvaluateConditionFormula -EvaluateGroupNumber -HierarchicalSummaryType -ResetCondition

	<ul style="list-style-type: none"> -ResetConditionField -ResetConditionFormula -ResetGroupNumber -SecondarySummarizedField -SummarizedField -SummaryOperationParameter -SummaryType <p>Methods</p> <ul style="list-style-type: none"> -SetEvaluateConditionField -SetNoEvaluateCondition -SetNoResetCondition -SetResetConditionField -SetSecondarySummarizedField -SetSummarizedField
RunningTotalFieldDefinitions	<p>Methods</p> <ul style="list-style-type: none"> -Add -Delete
Section	<p>Methods</p> <ul style="list-style-type: none"> -AddBlobFieldObject -AddBoxObject -AddCrossTabObject -AddFieldObject -AddGraphObject -AddLineObject -AddPictureObject -AddSpecialVarFieldObject -AddSubreportObject -AddSummaryFieldObject -AddTextObject -AddUnboundFieldObject -DeleteObject -ImportSubreport
Sections	<p>Methods</p> <ul style="list-style-type: none"> -Add -Delete
SQLExpressionFieldDefinitions	<p>Methods</p> <ul style="list-style-type: none"> -Add -Delete
SubreportLink	<p>Properties</p> <ul style="list-style-type: none"> -MainReportField -Parent -SubreportField
SubreportLinks	<p>Methods</p> <ul style="list-style-type: none"> -Add -Delete
SubreportObject	<p>Property</p> <ul style="list-style-type: none"> -Links <p>Method</p>

	-ReImportSubreport
SummaryFieldDefinition	Methods -HierarchicalSummaryType -SetSecondarySummarizedField -SetSummarizedField
SummaryFieldDefinitions	Methods -Add -Delete
TableLinks	Methods -Add -Delete

Copyright

© Copyright 2011 SAP AG. All rights reserved.

No part of this publication may be reproduced or transmitted in any form or for any purpose without the express permission of SAP AG. The information contained herein may be changed without prior notice.

Some software products marketed by SAP AG and its distributors contain proprietary software components of other software vendors.

Microsoft, Windows, Excel, Outlook, and PowerPoint are registered trademarks of Microsoft Corporation.

IBM, DB2, DB2 Universal Database, System i, System i5, System p, System p5, System x, System z, System z10, System z9, z10, z9, iSeries, pSeries, xSeries, zSeries, eServer, z/VM, z/OS, i5/OS, S/390, OS/390, OS/400, AS/400, S/390 Parallel Enterprise Server, PowerVM, Power Architecture, POWER6+, POWER6, POWER5+, POWER5, POWER, OpenPower, PowerPC, BatchPipes, BladeCenter, System Storage, GPFS, HACMP, RETAIN, DB2 Connect, RACF, Redbooks, OS/2, Parallel Sysplex, MVS/ESA, AIX, Intelligent Miner, WebSphere, Netfinity, Tivoli and Informix are trademarks or registered trademarks of IBM Corporation.

Linux is the registered trademark of Linus Torvalds in the U.S. and other countries.

Adobe, the Adobe logo, Acrobat, PostScript, and Reader are either trademarks or registered trademarks of Adobe Systems Incorporated in the United States and/or other countries.

Oracle is a registered trademark of Oracle Corporation.

UNIX, X/Open, OSF/1, and Motif are registered trademarks of the Open Group.

Citrix, ICA, Program Neighborhood, MetaFrame, WinFrame, VideoFrame, and MultiWin are trademarks or registered trademarks of Citrix Systems, Inc.

HTML, XML, XHTML and W3C are trademarks or registered trademarks of W3C®, World Wide Web Consortium, Massachusetts Institute of Technology.

Java is a registered trademark of Sun Microsystems, Inc.

JavaScript is a registered trademark of Sun Microsystems, Inc., used under license for technology invented and implemented by Netscape.

SAP, R/3, SAP NetWeaver, Duet, PartnerEdge, ByDesign, SAP Business ByDesign, and other SAP products and services mentioned herein as well as their respective logos are trademarks or registered trademarks of SAP AG in Germany and other countries.

Business Objects and the Business Objects logo, BusinessObjects, Crystal Reports, Crystal Decisions, Web Intelligence, Xcelsius, and other Business Objects products and services mentioned herein as well as their respective logos are trademarks or registered trademarks of Business Objects S.A. in the United States and in other countries. Business Objects is an SAP company.

All other product and service names mentioned are the trademarks of their respective companies. Data contained in this document serves informational purposes only. National product specifications may vary.

These materials are subject to change without notice. These materials are provided by SAP AG and its affiliated companies ("SAP Group") for informational purposes only, without representation or warranty of any kind, and SAP Group shall not be liable for errors or omissions with respect to the materials. The only warranties for SAP Group products and services are those that are set forth in the express warranty statements accompanying such products and services, if any. Nothing herein should be construed as constituting an additional warranty.